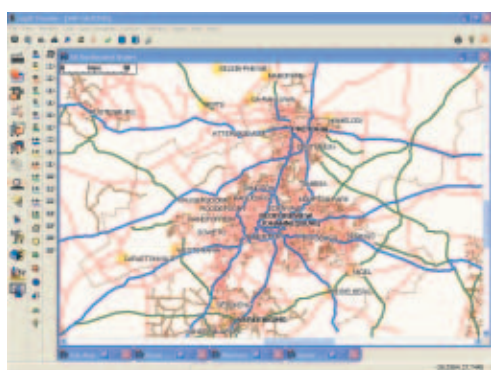




# LogiX Suite

## Route Planning and Scheduling



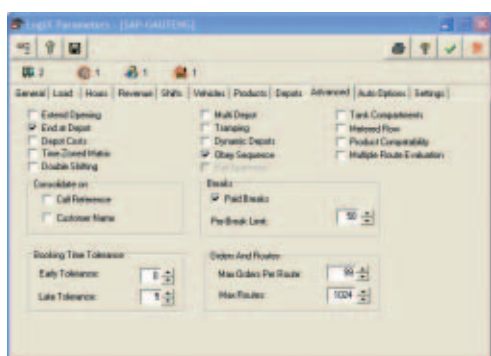
### CargoWare

CargoWare offers a wide range of specialised logistics support services including logistics consultancy and vehicle scheduling software. The LogiX Suite is a comprehensive range of products for vehicle scheduling at operational, strategic and tactical level.

### Plan LogiX

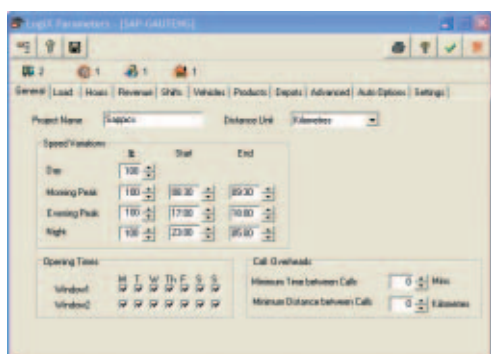
Plan LogiX is a computerised route scheduling system, which can either be employed in 100% interactive mode, 100% automatic, or anywhere in between. The advantage is that it can take over the planning process or the system can be interactive to whatever degree the operator chooses. The operator can then designate how interactive the system is, allowing the planner to draw on their own distribution experience to make additions to the plan produced by LogiX.

If you choose to use Auto LogiX either in a live situation or strategic environment, then the fully automatic facility can help your planning process with it's ability to test alternative "what if" scenarios by changing depot locations, vehicle types, etc.



**The flexibility and ease of route planning makes Plan LogiX ideal for:**

- Multi-drop deliveries
- Trunk planning
- Assessing alternative "what if" scenarios
- Producing detailed K.P.I.'s



In conditions where 'semi-fixed' routes are used, Plan LogiX has the ability to use zoning and optimise accurately to fully reflect the reality of each situation.

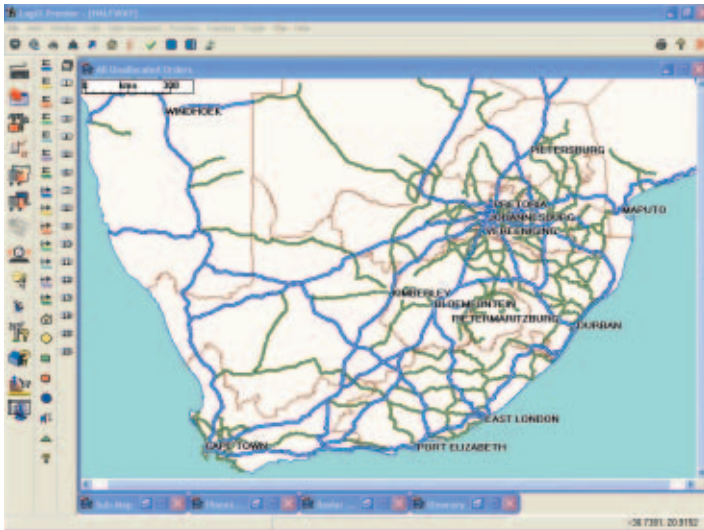
Plan LogiX provides operators with strategic and tactical features to cope with a variable range of situations, both real and strategic.





## Route LogiX

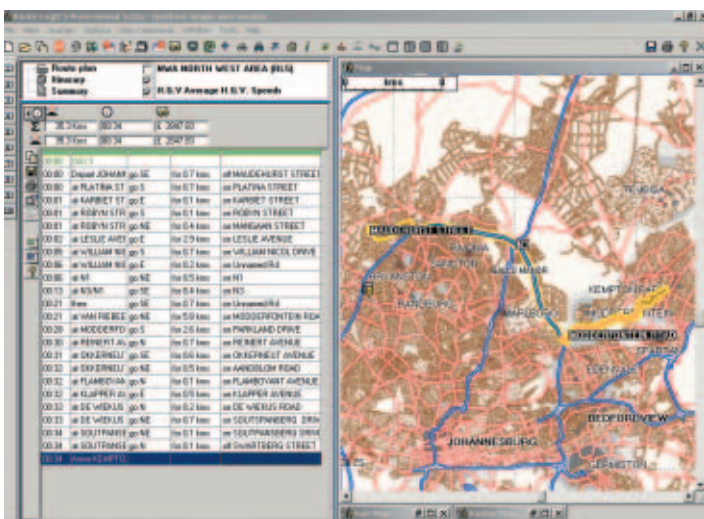
Route LogiX is the leading computer-aided solution to the problem of day-to-day route planning. The system is a computerised road map that will calculate the shortest, quickest and cheapest route between your journey start and destination. Travel from Johannesburg to Cape Town or from Pofadder to Piet Retief with the confidence of knowing how far you are travelling, when you will arrive and how much the journey will cost.



Route LogiX offers superb graphics – Maps are displayed in full colour and the precise area of the country that you want can be displayed with a couple of mouse clicks without the frustration of paper maps.

Sophisticated algorithms quickly calculate the optimum route to your destination, and provide a detailed itinerary of the roads to use, the distance covered and associated costs. The routes can then be displayed on the road map so that you can see exactly the route to take and then be printed out or saved as bitmap files for inclusion in presentations, etc.

Route LogiX is based on intelligent vector map networks that use actual distances and road speeds. The system also knows the characteristics of the roads such as whether it is a two-way or one-way road, etc. and whether it is in a rural, urban or inner city environment. Maps-sets can be prepared as national urban and neighbouring state versions to suite your operational needs. Databases are currently available for South Africa, Gauteng, Western Cape, Eastern Cape, KwaZulu Natal and Southern Africa.



Route LogiX caters for changing traffic patterns and road conditions by allowing the user the discretion to ban chosen roads or parts thereof, slow down or set preferred sections of roads and avoid certain areas by a given radius. The system also provides user definable speed variation by time of day to enable greater accuracy over rush hour journeys.

The end result using Route LogiX is always the shortest, quickest or cheapest route and it's only a keystroke away.